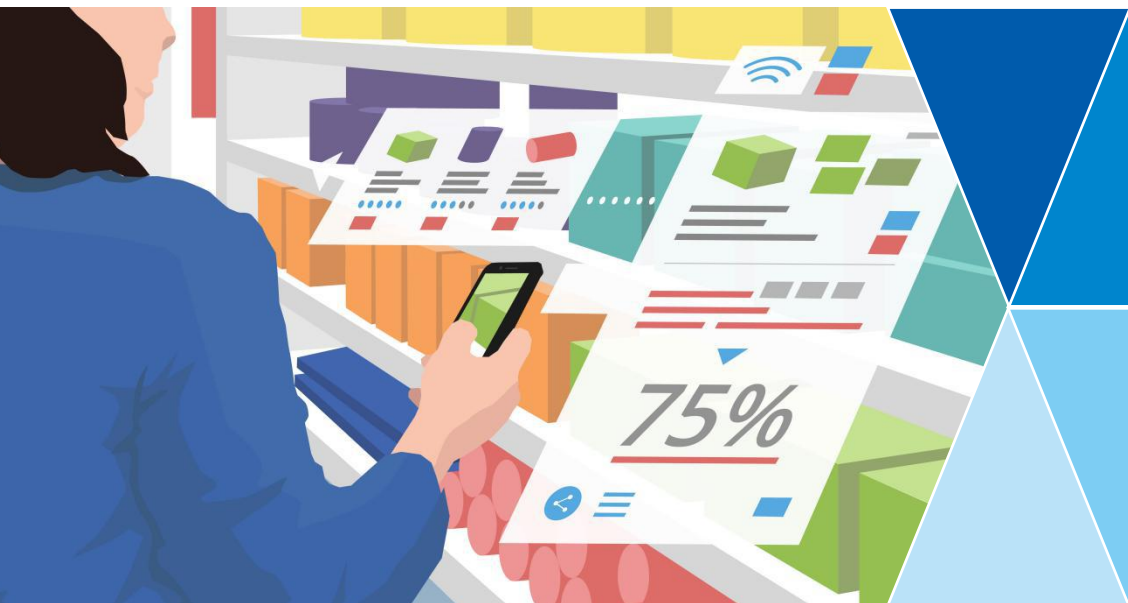


SRE 2020



**INVITATION
TO ATTEND**

The 3rd Guangzhou Int'l Smart



AUG. 3RD-5TH, 2020
CHINA IMPORT &
EXPORT FAIR
COMPLEX

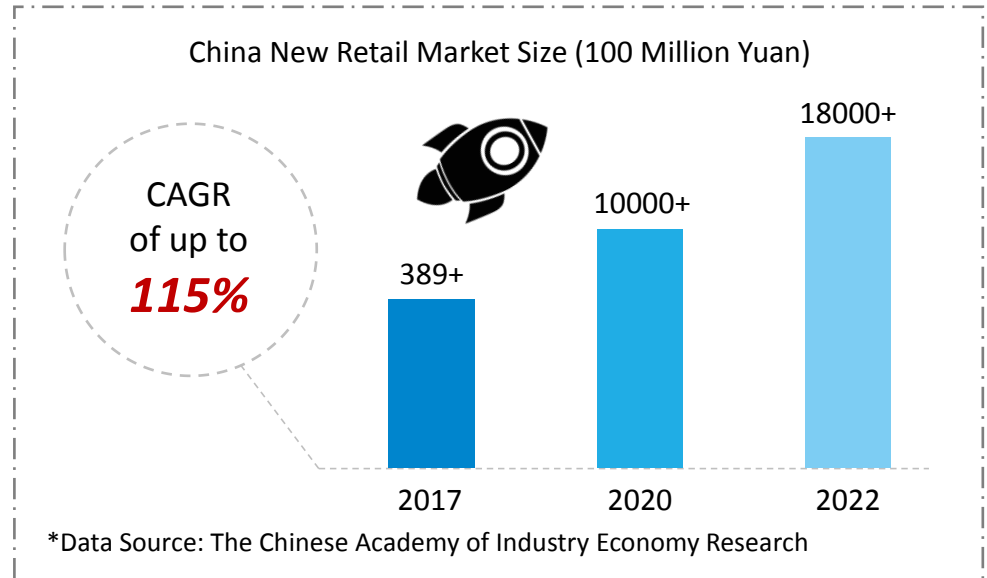
FOR MORE
INFORMATION:
[WWW.NEWRET
AILCHINA.COM](http://WWW.NEWRET
AILCHINA.COM)

*1 of the 4 Sub-Fairs of Guangzhou Int'l Commercial Smart
Equipment Expo (Smart Expo China), an UFI Approved
Leading Event!*



A TRILLION-YUAN MARKET IS TAKING SHAPE!

According to recent report by Forward, in 2018 New Retail accounted for **22.4%** of China's total retail revenue, and this number is expected to grow to **33%** by 2023. As of 2022, China's New Retail market will reach the size of **1.8 Trillion Yuan**.

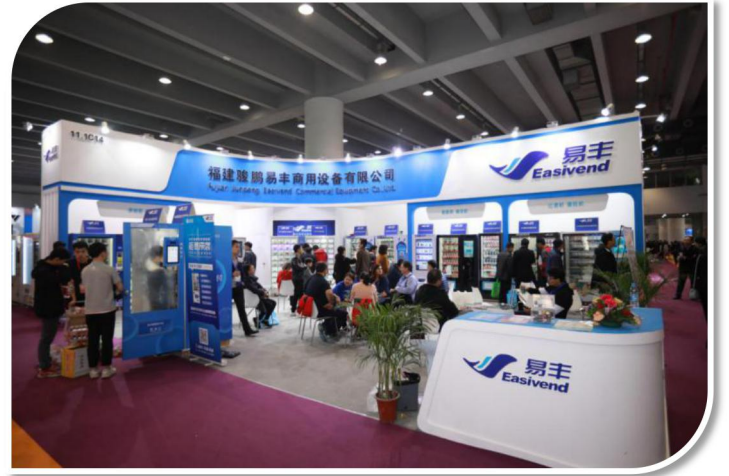


REVIEW OF SRE 2019

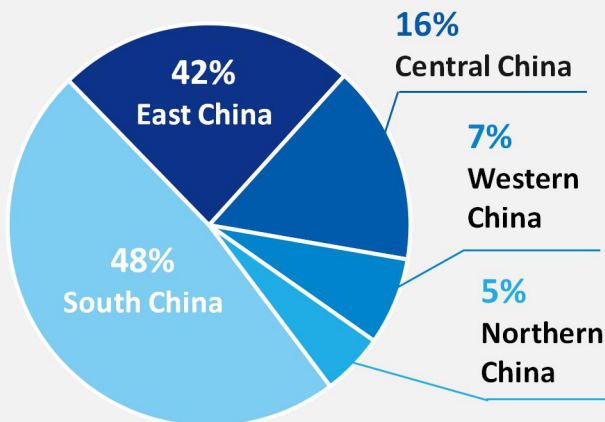
Basic Facts & Figures

(*Smart Expo China 2019 Included)

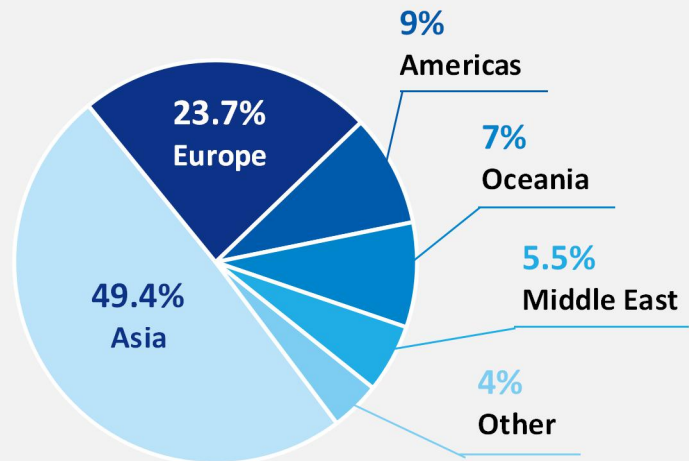
- **365** Exhibitors;
- **32505** Visits;
- **13045 Sq.m** Net Exhibiting Space;
- **61%** Buyers Invested at Least 2 Days in Visiting the Show;
- **2713** Overseas Visitors From Over **60** Countries and Regions Attended the Show.



Chinese Buyers Analysis



Overseas Buyers Analysis



Interesting to witness the advance China has made in the last 10 years. A lot of manufacturers and technology companies are being born.

*Senior Product Design
Manager of The Wittern
Group*

**See What
Our
Overseas
Visitors
Said!**

That was a memorable trip in China. They are so far ahead of us in so many ways regarding Unattended Retailing!

*Managing Director at
SV365 Technologies*

GLOBAL EVENT MARKETING

We yearly attend dozens of related trade shows and conferences for promotion, making SRE a worldwide name and brand!

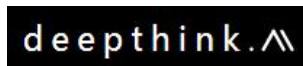
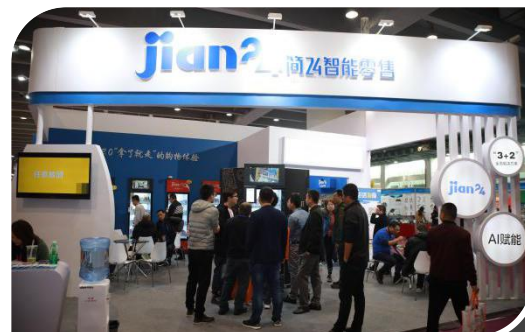


THE CHOICE OF **WORLDWIDE QUALITY EXHIBITORS**

As the signature trade show in China's smart retail industry, SRE is not only the go-to event for Chinese start-ups and leading players to build their brand awareness, but also where overseas enterprises knock open China's promising market!

By the end of Oct. 2019, a host of premium exhibitors have confirmed their attendance!

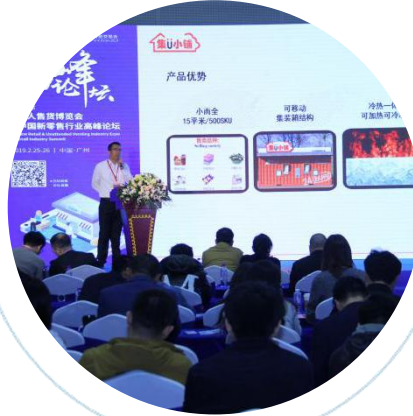
▶▶ *Partial Confirmed Exhibitors of SRE 2020*



SMART RETAIL WORLD FORUM

▶▶ *Learning From the Best!*

Dozens of Thought Leaders from across the globe sharing with you their insights and hands-on experience in smart retail management and operation!



▶▶ *Networking With Your Peers!*

Making valuable new contacts among hundreds of industry elites of out-standing manufacturers, franchisors, investors, and operators!



▶▶ *Discovering the Latest Trends!*

Discussions will center around topics like smart retail management, RFID, electronic labels, facial payment, smart shopping carts, self-checkout stations, and etc.



Other Live Activities at SRE 2020



Opening Ceremony



Appreciation Dinner



China New Retail Industry Forum

MORE ABOUT SRE...

SRE will be sharing a **80,000** show floor with the other 3 sub-fairs of Guangzhou Int'l Commercial Smart Equipment Expo (Smart Expo China), which are:

- Guangzhou Int'l Vending Machines & Self-service Facilities Fair (VMF)
- China (Guangzhou) Int'l Commercial Payment System & Device Expo (CCP)
- Asia-Pacific Perishable Logistics & Cold Chain Exhibition (PLCE)



Exhibition Scope

- **Smart Retail Franchise:** convenience stores, super markets, restaurants, grocery stores, cafes, and etc.
- **Smart Retail:** biometric technologies, smart display & showcase, AI-based retail solutions, customer data analysis systems, big data technologies, POS, ERP, EAS anti-theft systems, CCTV, automatic delivery, and etc.
- **Unattended Retail:** micro markets, vending machine, unmanned shelves, checkout-free technologies, mobile payment systems, and etc.

Target franchisors/franchisees

- Manufacturers and franchisors of smart stores, convenience stores, retail stores, cafeterias, restaurants, coffee shops, grocery stores, beauty stores, shoes and clothing brands, smart pharmacies, shopping malls, hypermarkets, food and beverage brands, etc;
- Factories, universities and colleges, theaters, museums, parks, children's palaces, stadiums, cinemas, hospitals, banks, airports, bus stations, railway stations, subway stations, light rail stations, high-speed rail stations, etc;l
- Government agencies, financial & investment institutions, entrepreneurial institutions, commercial real estate developers, trade associations, media, etc.

Booth Rates & Contact Info

Standard Booth	Luxury Booth	Raw Space
\$2600/9sq.m	\$3000/9sq.m	\$260/sq.m
		Minimum rental area is 36 sq.m, with no construction, no facility.

Guangdong Grandeur International
Exhibition Group
SRE Organizing Committee

Contact Person: Mamie Ma
Tel: +86-20-29806623
Mob: +86 132 5034 2396
E-mail: sales1@grandeurhk.com
Twitter: @2020Sre
Facebook: www.facebook.com/mamie.ma.319
Linkedin: www.linkedin.com/in/mamie-ma-2a6754196/
Website: <http://newretailchina.com/index.php?lang=en>