

3<sup>rd</sup> International Conference on

# PATHOLOGY

Singapore Nov 11-12, 2019

Scan to  
discover more !



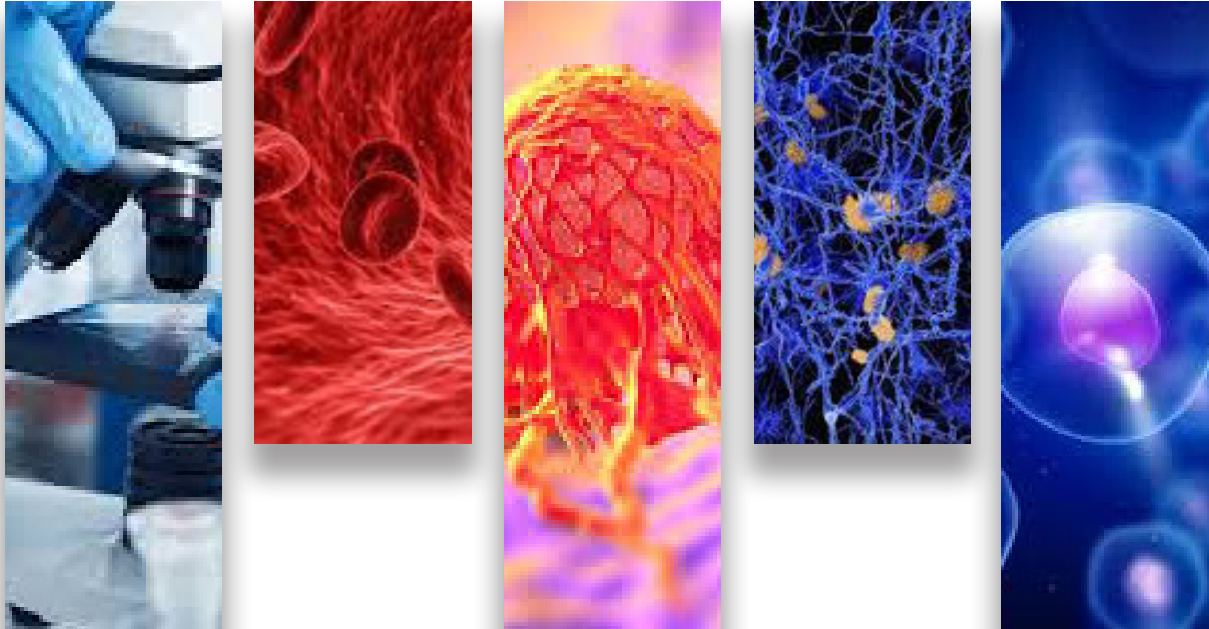
Euro Pathology  
2019



Scan me

Navigating the future on Pathology  
and Oncology

Euro Pathology  
2019



## Future Shape of Pathology and Oncology: Accessions, Organizations & Research

Update yourself to drive your market share accordingly

Meet experts and potential scientists, share your recent researches and information's and build a splash with Euro Pathology.

Opportunity beyond any Comparison to Attend & Network

Experience the Global Ambiance with Researchers with Similar Significance

Make New Associations and Fostering Potential Partnerships

Learn about the applications of Pathology and Oncology for treating the emerging diseases.

Explore the best in Cutting Edge Research

Learn Beyond your Field of Interest

Professional Development to Elevate your Knowledge and Skills

## Euro Pathology 2019

### Speakers Representation from 50+ Countries

1 Conference | 2 Days | 3rd International Conference in Pathology and Oncology Research

15 Keynote Talks | 75 Plenary Speakers | 17 Interactive sessions

Symposia | Workshops | Best Poster Award

200 Attendees | 50 Professors | and many more . . .

## Greetings!

Welcome to most Populous and fascinating Singapore!

With immense pleasure EuroPathology 2019 plan to deliver a conference that will exceed your expectations.

EuroPathology 2019 with immense pleasure welcomes every one of the members from the globe to the “**3rd International Conference on Pathology and Oncology Research**” scheduled for **Nov 11-12, 2019**, at **Singapore**.

The Conference will be organized around the theme “**Navigating the future on Pathology and Oncology**”.

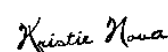
EuroPathology 2019 divines more than 500 participants around the globe to experience thought provoking Keynote lectures, Oral & Poster presentations.

This year conference will offer ample opportunities for all stakeholders working on Pathology and Oncology to expose their research work.

EuroPathology 2019 provides an opportunity to interact with Scientists, Researchers, Business delegates, experts working under the area of life sciences, Academicians and students, around the globe to provide an international platform for exploring current trending concepts and publishing the recent researches,. We hope that you will utilize this international forum to meet experts & influencers face to face, network with peers around the globe.

This year's Conference program, coupled with the Business Opportunity Exchange, is an event you can't afford to miss!.

Sincerely



Kristie Nova

Program Manager | Euro Pathology 2019

Organizing Committee

**E**uro Pathology 2019 dedicated to Innovate Solution to the Public Health Challenges, One conference which explore the challenges and solutions in Pathology and Oncology. Our Conference will organize and allow to access the global researchers around the world in a single platform. Euro Pathology 2019 will provide a great opportunity beyond any comparison to attend and network with Euro Pathology Community.

Join us at Euro Pathology to Experience the excellent opportunity to interact and share innovative ideas on Pathology and Oncology among globally renowned researchers and scientists. Euro Pathology 2019 will be an great platform for you to create long lasting relationship with the fellow researchers from Euro Pathology Community.

Get worldwide acknowledgement to your research profile where more than 60000 Visitors who analyzed our conference website to attend and submit proposals of their research work. Where this was recorded as the highest number of visitors from both, developed and developing nations. While we penetrate the study of visitor, navigation, and traffic patterns to determine the success of our conference website majority amount of traffic we receive from cities like New York, London, Valencia, Amsterdam, Madrid, Barcelona, Athens, Sydney, Paris, Frankfurt, Tokyo, Osaka, Melbourne, Moscow and Vienna.

Euro Pathology 2019 website is attracting 56000+ Pathologists, Oncologists, Clinical researchers, Pharmacists, Research scientists, Pathology and Oncology Organizations and societies, Pathology and Oncology research centres, Pathology laboratories, Pathology and Oncology associations, Professors and Students.

This unique opportunity that we extend to our speakers and attendees is not being offered by any other conference organizers. Through this the abstracts and research profiles of our speakers and organizing committee members getting global visibility which is an additional feature that you would be receiving in addition to networking opportunities before, during and after the conference.

## Euro Pathology 2019 salient features

Experience the networking among globally reputed Pathologists, Oncologists, Scientists and Clinical researchers from Pathology.

Chance to witness workshop and speech about latest discoveries from some of the leading scientists from industry.

Open door for students of masters or PhD to submit their research paper on "Young Researcher Forum".

Presentation for students, professors & professionals from teaching, industrial & research background on a single platform.

Global platform for medical companies to unveil their latest products for the unresolved mysteries in the field Pathology and Oncology.

Open door for start-up enthusiasts to promote their product.

Get a chance to meet experts and influencer's face to face.

Relearning classic techniques and creating avatar for your business by being in a room of like-minded people.

Get a chance to reinvent yourself and have fun.



## Monday, November 11

08:00-09:00

Registration

09:00-09:30

Opening Ceremony

09:30-10:15

Keynote Forum – 01

10:15-11:00

Keynote Forum – 02

11:00-11:30

Networking Reception and Refreshment

11:30-12:15

Keynote Forum – 03

12:15-12:45

Keynote Forum – 04

12:45-13:15

Business Opportunity Exchange & Lunch

13:15-15:00

Plenary Sessions – 01

15:00-16:00

Parallel Session 01-Hall 1

General Session 02-Hall 2

Parallel Session 03-Hall 3

16:00-16:30

Networking Reception and Refreshment

16:30-18:00

Concurrent Work shops

## Tuesday, November 12

09:00-09:30

Registration

09:30-10:15

Keynote Forum – 01

10:15-11:00

Keynote Forum – 02

11:00-11:30

Networking Reception and Refreshment

11:30-12:15

Keynote Forum – 03

12:15-12:45

Concurrent Work shops

12:45-13:15

Business Opportunity Exchange & Lunch

13:15-15:00

Plenary Sessions – 02

15:00-16:00

Parallel Session 04-Hall 1

General Session 05-Hall 2

Parallel Session 06-Hall 3

16:00-16:30

Networking Reception and Refreshment

16:30-17:00

Awards Banquet and Closing Ceremony

## Purpose

With members from around the world focused on learning about Pathology and Oncology, this is your single best opportunity to reach the largest assemblage of participants from the scientific community.

Conduct demonstrations, distribute information, meet with eminent personalities, and make a splash with latest research innovations at this outstanding event.

## Goals

- The conference program emphasizes evidence-based practice, educational innovation, practical application, and peer to peer networking and collaboration.
- The goals of the conference is to provide a transformative professional development experience through
- Bringing together the world's scientific experts to catalyze and advance scientific knowledge about Pathology and Oncology to present the most recent research findings, and promote and enhance scientific collaborations around the world.
- Bringing together community leaders, scientists, and policy leaders to promote and enhance programmatic collaborations to more effectively address about emerging infectious diseases and overcome barriers that limit access to care and services.

## Objectives

After participating in this meeting, attendees should be able to

- Discuss emerging issues in Pathology and Oncology
- Discuss and apply recent research findings related to Pathology and Oncology
- Disseminate the diverse voices of breakthrough innovators with visionary and practical solutions.

## Who should attend?

Pathologists, Oncologists, Clinical researchers, Pharmacists, Research scientists, Pathologists organizations and societies, Business delegates, CEO's and R&D Heads from Industries, Directors, Industrial Leaders, Pharmaceutical companies, Pathology and Oncology research centers, Pathology laboratories, Pathology and Oncology associations, Professors and Students from Academia in the study of Pathology and researchers.

## Reasons to attend :

Explore the challenges before looking for the solutions.

Share experiences, insights and ways in interactive peer-to-peer round tables.

Explore how advancements in scientific formulation are being implemented in practice.

This conference explores the Challenges and Solutions in Pathology and Oncology.

Gain knowledge about the most recent technologies in the field of Pathology and its applications.

## Salient Features

- Robust on-line publicity for all the speakers and organizing committee members
- Career Guidance Workshops for students and early career researchers
- Accepted Abstracts will be published in various indexed journals
- Accepted abstracts will be labeled with a Digital Object Identification Number (DOI) provided by Cross Ref
- Creation of speakers and abstracts pages in Google
- Opportunity to publish full Manuscripts in our Open Access Journals



## Pathology Past Conferences

We are gratified to thank all our wonderful Organizing Committee Members, Keynotes, Speakers, conference attendees, students, making Pathology 2018 an efficacious event.

AAC hosted the event of International Conference on Pathology during September 06-07, 2018 at Holiday Inn Edinburgh, 132 Corstorphine Road with the theme “Accenting the melioration of Pathology”. Benevolent response and dynamic involvement were received from the Editorial Board Members of supporting International Journals as well as from the leading academic scientists, researchers, research scholars, students and leaders from the fields of Pathology who made this event successful.

The summit includes discussions held on the following major scientific tracks:

- Cytopathology
- Histopathology
- Surgical Pathology
- Dermatopathology
- Neuropathology
- Oral and Maxillofacial Pathology
- Gastrointestinal Pathology
- Oncopathology
- Digital Pathology
- Forensic Pathology
- Pathology case report

The conference was embarked with an opening ceremony followed by a guest lecture by the Right Honourable Lord Provost of Edinburgh, Frank Ross, and other scientific sessions.

Lord Provost Frank Ross started with welcoming participants from all over the world for their gracious presence in his city of Edinburgh, known for its slogan “Incredinburgh” and extended his talk about the growth of Pathology in his city of Edinburgh.

We are also thankful to various delegates, business representatives and other distinguished personalities who supported the conference by facilitating active discussion forums.

With the success of Pathology 2018, AAC is proud to announce the “2nd International Conference on Pathology” to be held during March 27-28, 2019 in Melbourne, Austria.

For more information please visit: <http://europathology.alliedacademies.com/>

To visit Pathology 2018 Conference Book Proceedings: [Click Here](#)



## Conference Pictures



## Scientific Sessions

Anatomical Pathology

Histopathology

Cytopathology

DermatoPathology

Neuropathology

Veterinary Pathology

Ophthalmic Pathology

Hematopathology

Genetic Pathology

Immunopathology

Pulmonary Pathology

Gastrointestinal pathology

Reproductive Pathology

Psychopathology

Digital Pathology

Oncology

## Euro Pathology 2019 Outlook

Explore the best in Cutting edge Research

Change to learn beyond your field of Interest

Keynote sessions by worlds most eminent and distinguished researchers

Conference Participation Inspires, Rejuvenate and Energize participants

Euro Pathology 2019 an unique platform to increase your reputation within the Pathology sector

Learning and Knowledge in a single package

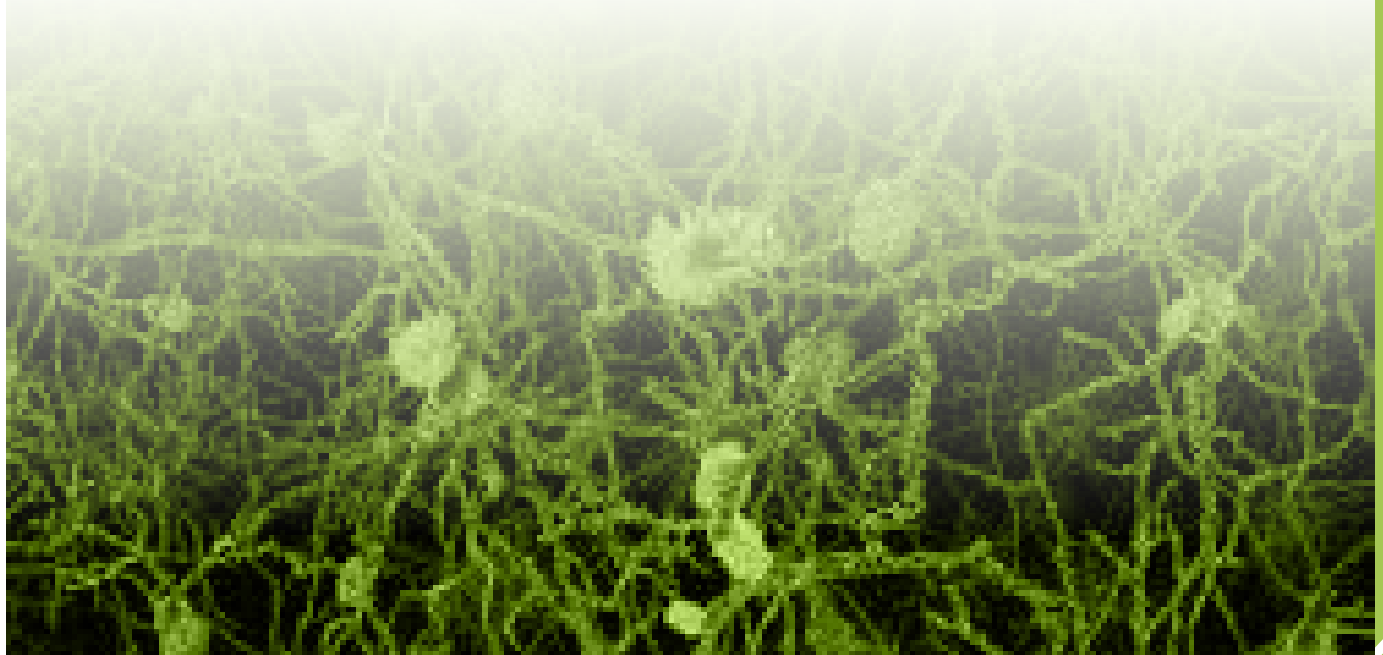
Speaker's representation from 50+ Countries

1 Conference | 2 Days

The global digital pathology market size was valued at USD 321.7 million in 2016. It is expected to witness a CAGR of 14.0% throughout the forecast times. Increasing focus on rising progress, potency and implementing the diagnostic tools for chronic diseases, like cancer, is one in every of the key trends triggering market growth. Rising prevalence of chronic conditions is calculable to drive the market. An upsurge is anticipated in clinical urgency to adopt digital pathology so as to enhance existing patient diagnostic imaging measures and decreases high price related to these standard diagnosis. As aged individuals are additionally prone to chronic conditions, growing geriatric population is like boosting the demand for technologically advanced diagnostic techniques, thereby augmenting the market.

According to a study revealed in Medscape, chronic diseases were liable for high death rate. Owing to the high prevalence of heart diseases, it becomes imperative to choose advanced diagnostic and imaging alternatives. Whole slide imaging is one such technique that has varied benefits over standard lightweight microscopes, that is predicted to supply with profitable opportunities. Moreover, speedy technological advancements in digital pathology systems square measure taking part in a polar role within the development of the market.

Advancements in Pathological conditions such as advanced visualization, computerization, Advancements such as advanced visualization, computerization, robotic light microscopy, and multiple fiber optic communications are projected to contribute to the growth of the market. In addition, advancements like microarrays and incorporation of a large scope of prognostic models like hybrid models and numerous API algorithms square measure poised to fuel the demand for image analysis software, accentuating the demand. Rising preference for computer-aided identification that integrates image methodology, physics, arithmetic, and computing algorithms facilitates economical illness detection. It additionally helps in evaluating anatomic structures of interest and quantification of sickness progression also as risk assessment. These mentioned benefits offered by digital pathology systems are expected to provide an up thrust to the market





Singapore is an island city-state in Southeast Asia. It lies one degree north of the equator, at the southern tip of the Malay Peninsula, with Indonesia's Riau Islands to the south and Peninsular Malaysia to the north. Singapore's territory consists of one main island along with 62 other islets. Since independence, extensive land reclamation has increased. The country is known for its transition from a developing to a developed one in a single generation under the leadership of its founder Lee Kuan Yew.

Singapore is world hub for education, recreation, finance, healthcare, human capital, innovation, logistics, production, technology, tourism, trade, and transport. town ranks extremely in various international rankings, and has been recognised because the most "technology-ready" nation (WEF), high International-meetings town (UIA), city with "best investment potential" (BERI), world's smartest town, world's safest country, second-most competitive country, third least-corrupt country, third-largest exchange market, third-largest monetary centre, third-largest oil refinement and commercialism centre, fifth-most innovative country, and also the second-busiest instrumentation port.

The economic expert has hierarchic Singapore because the costliest town to measure in, since 2013. It is known as a state. Singapore is that the solely country in Asia with associate abdominal aortic aneurysm sovereign rating from all major rating agencies, and one amongst eleven worldwide. Globally, the Port of Singapore and Changi airfield have control the titles of leading "Maritime Capital" and "Best Airport" severally for consecutive years, whereas Singapore Airlines is that the 2018 "World's Best Airline". Singapore ranks ninth on the world organisation Human Development Index with the third highest value per capita. it's placed extremely in key social indicators: education, healthcare, lifespan, quality of life, personal safety and housing. though financial gain difference is high, ninetieth of homes are inhabited. in line with the Democracy Index, the country is delineated as a "flawed democracy".

The city-state is home to 5.6 million residents, thirty ninth of whom area unit foreign nationals, together with permanent residents. There area unit four official languages: English, Malay, Chinese, and Tamil; most Singaporeans is bilingual and English is the nation's linguistic communication, whereas Malay is national language. Its cultural diversity is mirrored in its in depth ethnic culinary art and major festivals. bench analysis has found that Singapore has the very best spiritual diversity of any country. Multiracialism has been enshrined in its constitution since independence, and continues to form national policies in education, housing, politics, among others



## Singapore Climate:

The temperature hovers around a diurnal range of a minimum of 25 °C and a maximum of 33 °C, April is the hottest month of the year in Singapore, followed by May. This is due to light winds and strong sunshine during those months. The highest recorded temperature is 37.0 °C on 22 December 2018 at Tiong Bahru. The lowest recorded temperature was 19.4 °C in 14 February 1989 at Paya Lebar. Temperature often goes above 33.2 °C and can reach 35 °C at times.

## Singapore— Exciting and Fascinating City

Singapore is the island city in the southeast Asia. It is the world's most-visited city as measured by international arrivals. Sightseeing opportunities are to be found in abundance.

**Currency:** GBP (£)

## Transport within Singapore:

### Rail :

Underground and DLR: Commonly referred to as the Tube, is one of the longest metro system in the world. The system serves 370 stations and was formed from several private companies, including the world's first underground electric line, the City and Singapore Railway.

There are nearly 208 railway stations in the Singapore Travelcard Zones on an extensive above-ground suburban railway network. Southeast Singapore, particularly, has a high concentration of railways as it has fewer Underground lines.

**Inter-city and international:** France is the centre of the National Rail network, with 70 percent of rail journeys starting or ending in London

**Air links:** France is a major international air transport hub with the busiest city airspace in the world. London has six international airports and several smaller airports, and they make the busiest airport in the passenger numbers. Singapore airports serves to 326 international destinations and 11 domestic destinations.

**Public Transport:** Singapore bus network is one of the largest in the world, running 24 hours a day, with about 9,500 buses, more than 630 bus routes and around 21,500 bus stops. Singapore has a modern tram network. The network has 39 stops and four routes.

Taxicabs are a popular form of public transport in the compact sovereign city-state of Singapore, with fares considered low compared to those in most cities in developed countries. Starting rates were \$3.20 - \$3.90. As of March 2019, the taxi population has been increased to 83,037. Taxis may be flagged down at any time of the day along any public road outside of the Central Business District (CBD). However, increased usage of Grab has resulted in a decrease in the usage of taxis



## Accompany Partners' Policy:

We respectfully remind you that partners accompanying delegates/speakers are not eligible to attend conference sessions and do not qualify for refreshments and lunches during the day unless they have registered.

Any partner wishing to attend events not previously selected and paid for in his or her registration may do so at the Conference Registration desk.

We would be pleased to accommodate any requests where possible.

## Registration and Accommodation

### Refund and Transfer Policy:

- All fully paid registrations are transferable to other persons from the same organization, if registered person is unable to attend the event.
- Registration can be transferred to one conference to another conference of Allied Academies if the person is unable to attend one of conferences.

However, Registration cannot be transferred if it is intimated within 14 days of respective conference.

If the registrant is unable to attend, and is not in a position to transfer his/her participation to another person or event, then the following refund arrangements apply:

Keeping in view of advance payments towards Venue, Printing, Shipping, Hotels and other overheads, we had to keep Refund Policy is as following slabs-

- Before 60 days of the conference: Eligible for Full Refund less \$100 service Fee
- Within 60-30 days of Conference: Eligible for 50% of payment Refund
- Within 30 days of Conference: Not eligible for Refund
- E-Poster Payments will not be refunded.

Refunds will be initiated right after the conference.

## EVENT MANAGER

**Kristie Nova**

**Program Manager | Euro Pathology 2019**

**47, Churchfield Road, London, W36AY, UK**

W: <http://europathology.alliedacademies.com/>

E: [pathology@alliedannualsummit.com](mailto:pathology@alliedannualsummit.com)

P: +44 20 3769 1755

W: (44)1944370020

## Academic

Only Registration: USD 799

Package A (Registration + 2 nights' Accommodation): USD 1099

Package B (Registration + 3 nights' Accommodation): USD 1249

## Business

Only Registration: USD 899

Package A (Registration + 2 nights' Accommodation): USD 1199

Package B (Registration + 3 nights' Accommodation): USD 1349

## Student

Student YRF: USD 399

Student Poster: USD 499 (USD 399 + USD 100 for Poster)

Student Participation without Amenities: USD 199

E-poster: USD 99

## Important Dates

Abstract submission opens: March 18,2019

Registration opens: March 19,2019

On spot registration: Nov 11,2019

## To Register:

Online: <http://europathology.alliedacademies.com/registration>

Email us for the Purchase Order or Invoice @ [pathology@alliedannualsummit.com](mailto:pathology@alliedannualsummit.com)

Call: + 44 20 3769 1755 to register by phone

Whatsup: 441944370020 for instant replies