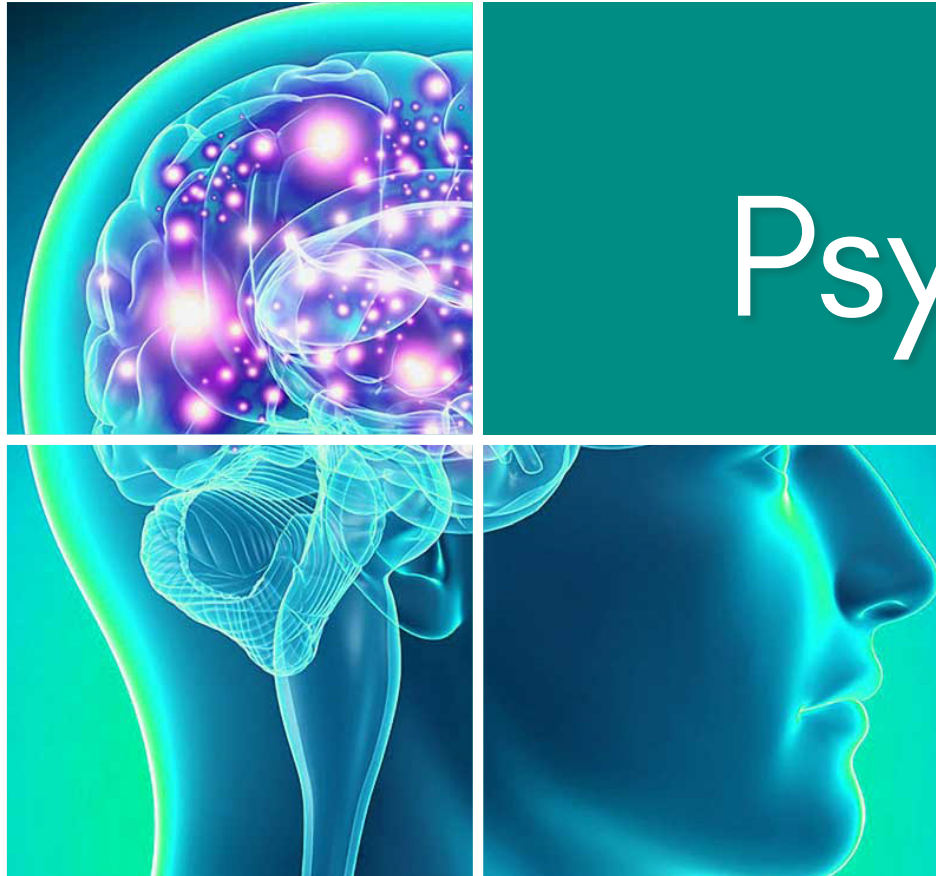


PULSUS
WWW.PULSUSCONFERENCE.COM

3rd Annual Congress on
Psychiatry

April 17-18
2019
Amsterdam,
Netherlands



*Hosting Organization: **Pulsus Group**
40 Bloomsbury Way | Lower Ground Floor
London, United Kingdom | WC1A 2SE | Tel: +1-408-429-2646
psychiatrycongress@pulsusevents.org*

Invitation

PULSUS brings in a new spin on conferences by presenting the latest scientific improvements in your field. Listen to motivating keynotes from thought leaders, or rub elbows with pioneers across the globe. Rome is all set for an amazing event as PULSUS proudly presents the “3rd Annual Congress on Psychiatry” slated on **April 17-18, 2019** at **Amsterdam, Netherlands**.

PULSUS cordially welcome researchers, academicians, students and business professionals in the field of Diabetes research and Endocrinology professionals from around the world to participate in the upcoming Psychiatry Congress 2019. The meeting for this year will revolve around the theme “**Scientific meeting to focus on progressive novelties in Psychiatry**” thus relaying the most cutting edge findings in the field of Psychiatry. The two day meeting is going to be an event to look forward to for its enlightening symposiums & workshops from established experts of the field, exceptional keynote sessions directed by the best in the business. It will also prove to be a brilliant open door for the representatives from Universities and Institutes to cooperate with the world class researchers and an outstanding opportunity for businesses keen at expanding their global market reach. Interested individuals can confirm their participation by registering for the conference along with their colleagues. Register soon and avail exciting early bird discounts.

Regards
Psychiatry Congress 2019
Organizing Committee

Conference Highlights

- Psychiatry
- Child and adolescent psychiatry
- Geriatric psychiatry
- Forensic psychiatry
- Addiction psychiatry
- Alcohol/Substance Abuse
- Neurodevelopmental Disorders
- Depression, Anxiety and stress disorders
- Personality disorders
- Paraphilic Disorders
- Schizophrenia
- Bipolar and Related Disorder
- Eating disorders
- Sleep Disorders
- Psychiatric Diagnosis
- Psychiatric Rehabilitations
- Pain Management
- Psychiatric Treatment
- Clinical Trials

About PULSUS

Pulsus Group is an internationally renowned medical peer-review publisher and conferences organizer established in the year 1984 publishes and hosts the work of researchers in a manner that exemplifies the highest standards in research integrity.

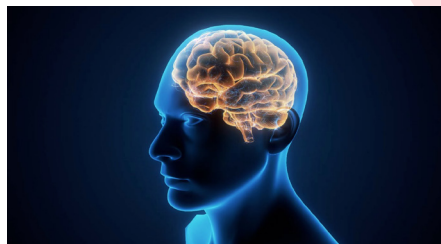
PULSUS conferences act as a catalyst on the research trends that really matter and spurring their adoption by exploring and disseminating cutting-edge information. Thus, mainly adhere to stringent peer-review procedure with a view to set an example in promoting standard medical research with integrity. As an ardent supporter of medical publishing, **Pulsus** Group closely associates with the American Board of Psychiatry and Neurology (ABPN), American Neurological Association (ANA), American Society of Neuroimaging, Neurological Society of India, Indian Academy of Neurology, Arizona Neurological Society, California Neurology Society.

Pulsus Conferences explore the future by connecting minds and spreading brilliance at **Pulsus** Group annual conferences & meetings. Meet your colleagues, discuss your specialty, spread and aid, learn & grow in association with 1000+ scientific societies from The USA, Europe, The Middle East, Africa and The Asia-Pacific region. **Pulsus** group is closely associated with globally renowned academic and research societies.

Pulsus Conferences believe that true technology and innovation depends on hearing from, and listening to, people with a variety of perspectives. **Pulsus** Conferences enhances the technology for people from underrepresented groups by actively recruiting diverse speakers for our events, signing up a broad variety of authors for journals and videos, and taking part in ongoing conversations about the value of diversity in the communities we serve.

Pulsus Group Journals

EB Members



Psychological wellness and social issues (e.g. despondency, tension and medication utilize) are accounted for to be the essential drivers of incapacity around the world, causing more than 40 million years of inability in 20 to 29-year-olds. It is assessed that 1 out of 6 individuals in the previous week encountered a typical Psychiatric issue.

Approximately one out of four individuals in the Netherlands will, at one point in their live interacts with a sorrow or a tension issue. The weight of ailment from these afflictions is extensive: they represent reduced working, a great deal of nonattendance from work, high expenses for society and notwithstanding for the improvement of other physical sickness. It is hence that the World Health Organization has evaluated that gloom, on account of its effect on personal satisfaction; in the year 2020 will be 'open ailment number one' in each western nation.

Who should attend?

- Psychiatrists
- Physicians
- Psychologists
- Nurse Practitioners
- Physician Assistants
- Marriage and Family Therapists
- Clinical Psychotherapists
- Nurses
- Social Workers
- Graduates, Post Graduates & PhD Scholars
- Professors, Associate Professors, Assistant Professors
- Pharmaceutical Companies & Manufacturing Companies
- Research Institutes and members
- Business Entrepreneurs

Why to attend?

- Listen to nationally-renowned lecturers.
- Engage through extremely knowledgeable professionals who “walk the talk” and actively interact and discuss with them to improve your wisdom and practice.
- Advance your knowledge through a variety of learning formats, including moralistic lectures, collaborating meetings, faculty, and lively case study discussions.

Conference Agenda / Program

Event at a Glance

		April 17, 2019
Time	Session	
08:30-09:30	Registrations	
09:30-11:30	Keynote Forum	
		Group Photo
11:30-11:45	Network & Refreshments Break*	
11:45-13:00	Psychiatry Child and adolescent psychiatry Geriatric psychiatry	
13:00-13:45	Lunch Break**	
13:45-16:00	Forensic psychiatry Addiction psychiatry Alcohol/Substance Abuse	
16:00-16:15	Network & Refreshments Break*	
16:15-18:00	Neurodevelopmental Disorders Depression, Anxiety and stress disorders Personality disorders	
		Day Concludes
		April 18, 2019
08:30-09:30	Registrations	
09:30-10:30	Keynote Forum	
10:30-11:30	Paraphilic Disorders Schizophrenia Bipolar and Related Disorder	
11:30-11:45	Network & Refreshments Break*	
11:45-13:00	Eating disorders Sleep Disorders Psychiatric Diagnosis	
13:00-13:45	Lunch Break**	
13:45-16:00	Psychiatric Rehabilitations Pain Management Psychiatric Treatment	
16:00-16:15	Network & Refreshments Break*	
16:15-18:00	Poster Presentations	
		Day Concludes
		Award Ceremony
		Conference Concludes

Editorial Board Members

Dr. Hao-Fan Chung

Loughborough University, United Kingdom

Steliana Rizeanu

Hyperion University of Bucharest, Romania

Sergio Zanini

Scientific Institute Eugenio Medea, Italy

Supporting Journals

Selected contributions will be published in following supporting international Journals:

Journal of Child and Adolescent Psychiatry

Journal of Clinical Psychiatry and Neuroscience

Psychiatry and Mental Health Research journal

About City and Venue



Amsterdam is the Netherlands' capital it has a populace of around 851,373 inside the city appropriate, and 1,351,587 in the urban zone and 2,410,960 in the Amsterdam metropolitan territory. Amsterdam's the name gets from Amsterdam the city's beginning as a dam of the waterway Amstel. Beginning as a little angling town in the late twelfth century, Amsterdam wound up a standout amongst the most essential ports on the planet amid the Dutch Golden Age a consequence of its creative improvements in exchange. The seventeenth century channels of Amsterdam and the 19–twentieth century Defense Line of Amsterdam are on the UNESCO World Heritage List. Amsterdam was positioned the second-best city in which to live by the Economist Intelligence Unit and twelfth all inclusive on nature of living for condition and framework by Mercer. Amsterdam's fundamental attractions, including its notable trenches, the Rijksmuseum, the Van Gogh Museum, Stedelijk Museum, Hermitage Amsterdam, Anne Frank House, Amsterdam Museum and its numerous cannabis cafés draw in excess of 5 million worldwide guests every year.



Sponsorship

Why Sponsor Our Event?

- Maximum exposure at a premier conference devoted to those involved in the office professional industry.
- An opportunity to build and reinforce strategic relationships within the office professional industry.
- Time to network with industry colleagues and key decision makers.
- A cost effective way to reinforce your organization's brand and build brand awareness amongst a relevant audience.
- Access to a broad network of industry partners from state and federal Government departments and the private sector.
- Time to present latest innovations and new products or services to a pertinent audience, and showcase your expertise and capabilities.
- Increased marketing opportunities including visibility on the conference website and associated marketing materials

Diamond Sponsor: \$10000

- Top billing logo recognition (Chamber website, event website, invitation/publicity, event signage)
- Three corporate sponsored workshop slots (audio visual included).
- Two complimentary exhibit booths with priority to purchase exhibition space and choose booth location (Booth size-3X3 sqm).
- Four complimentary registrations.
- One A4 color advertisement in the congress program or book of abstracts (excluding cover pages).
- 50% discount on both Extra Delegate Registrations and Booth

Gold Sponsor: \$7500

- Logo recognition (Chamber website, event website, invitation/publicity, event signage)
- Two corporate sponsored workshop slot (must honor deadlines, catering and audio visual included).
- One complimentary exhibit booth with priority to purchase exhibition space and choose booth location (Booth size-3X3 sqm).
- Three complimentary congress registrations.
- Logo recognition on congress website front page with link and logo recognition on congress sponsorship page.
- One A4 color advertisement in the congress program or book of abstracts (excluding cover pages).
- 50% discount on both Extra Delegate Registrations and Booth

Silver Sponsor: \$5000

- Larger name recognition (Chamber website, event website, invitation/publicity, event signage)
- Two complimentary congress registrations.
- One corporate sponsored workshop slot (must honor deadlines, catering and audio visual included).
- One complimentary exhibit booth with priority to purchase exhibition space and choose booth location (Booth size-3X3 sqm).
- One A4 color advertisement in the congress program or book of abstracts (excluding cover pages).
- 50% discount on both Extra Delegate Registrations and Booth

Bronze Sponsor: \$3500

- Larger name recognition (Chamber website, event website, invitation/publicity, event signage)
- One complimentary congress registrations.
- One corporate sponsored workshop slot (must honor deadlines, catering and audio visual included).
- One complimentary exhibit booth with priority to purchase exhibition space and choose booth location (Booth size-3X3 sqm).
- One A4 color advertisement in the congress program or book of abstracts (excluding cover pages).
- 50% discount on both Extra Delegate Registrations and Booth

Exhibition Sponsor: \$2500

- Larger name recognition (Chamber website, event website, invitation/publicity, event signage)
- One complimentary congress registrations.
- One corporate sponsored workshop slot (must honor deadlines, catering and audio visual included).
- One complimentary exhibit booth with priority to purchase exhibition space and choose booth location (Booth size-3X3 sqm).
- Half Page A4 color advertisement in the congress program or book of abstracts (excluding cover pages).
- 25% discount on both Extra Delegate Registrations and Booth

Registration/Sponsorship Application Form

Name	
Organization/Company	
Package of your Choice	
Country	
State	
Address	
Email	
Tel	
Fax	

Please Select the Appropriate Level

Only Registration	<input type="checkbox"/>	Package A	<input type="checkbox"/>	Package B	<input type="checkbox"/>	Exhibition	<input type="checkbox"/>
Diamond Sponsor	<input type="checkbox"/>	Gold Sponsor	<input type="checkbox"/>	Silver Sponsor	<input type="checkbox"/>	Bronze Sponsor	<input type="checkbox"/>

Amount

For more details: <https://psychiatry.cmesociety.com/>
Email: psychiatrycongress@pulsusevents.org

PAYMENT INFORMATION

Credit Card. Please debit my:

Card No:     Others

Expiry Date:CVV.....

Signature:

Credit Card billing address:

.....

.....

Contact name and number for card holder:

.....

.....

Please note that cards will be debited within 7 days of your registration.

Yes I agree to the terms and conditions as stated on this form.

Delegates who do not pay their bookings are requested to provide a copy of bank transfer/credit card/cheque details to help payment allocation.

Staff at the event will request a credit card guarantee for delegates without proof of payment.

.....

.....

.....

.....

.....

.....

.....

.....

.....

.....

.....

.....

.....

.....

.....

.....

.....

.....

.....

.....

.....

.....

.....

Bank Transfer	In USD	In GBP	In EURO
Beneficiary's Name	PULSUS PTE LTD	PULSUS PTE LTD	PULSUS PTE LTD
Beneficiary's Account Number	0863999014	0863999049	0863999022
Bank Name and Address	CITI BANK, N.A 8 Marina View, #17-01 Asia Square Tower 1, Singapore 018960	CITI BANK, N.A 8 Marina View, #17-01 Asia Square Tower 1, Singapore 018960	CITI BANK, N.A 8 Marina View, #17-01 Asia Square Tower 1, Singapore 018960
SWIFT CODE	CITISGSG	CITISGSG	CITISGSG
Bank code	7214	7214	7214
Branch code	1	1	1

Important Dates

Abstract submission opens: **October 10, 2018**

Registration opens: **October 10, 2018**

Early bird registration: **December 17, 2019**

On spot registration: **April 17, 2019**

Abstract Submission link

<https://psychiatry.cmesociety.com/abstract-submission>

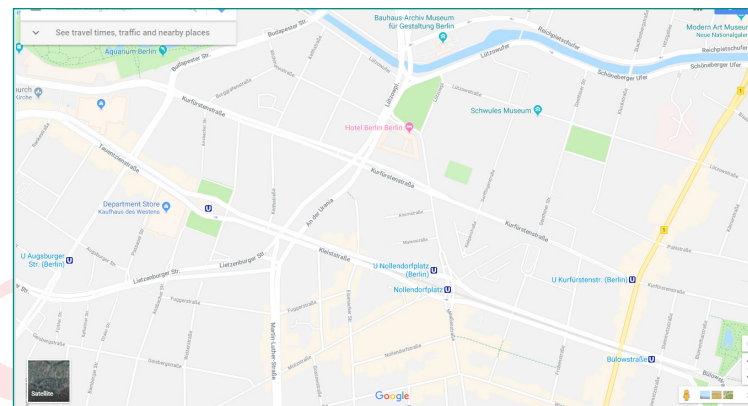
Note: All the relevant abstracts will be accepted and published in respective conference proceedings.

Registration link

<https://psychiatry.cmesociety.com/registration>

Venue Details

Amsterdam, Netherlands



UK: **PULSUS**

40 Bloomsbury Way, Lower Ground Floor

London, United Kingdom

WC1A 2SE | Tel: +44-203-769-1778

Asia Pacific: **PULSUS**

22 Sin Ming Lane, #06-76 Midview City

Singapore 573969

Fax: +65 672 50801