

conference**series**.com

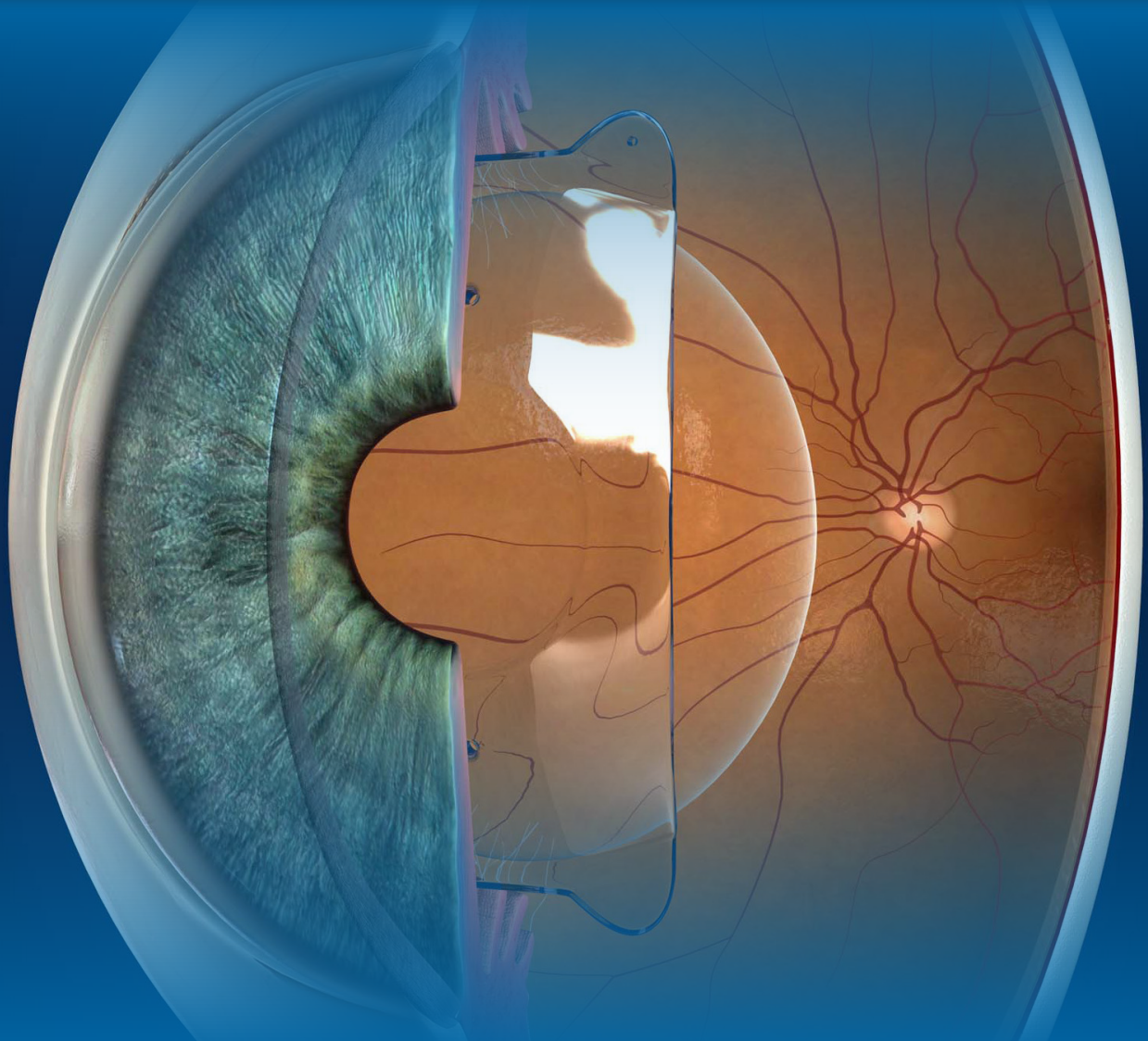
Tentative Program

18th International Conference on

GLAUCOMA AND RETINAL DISEASES

September 24-25, 2018 | Dallas, USA

Theme: "Clinical Glaucoma and Ophthalmic Research"



****For Available Speaker Slots****

glaucoma@americaconferences.com

Conference Series LLC Ltd

47 Churchfield Road, London, UK, W3 6AY

Toll Free: +1-800-014-8923

Email: glaucoma@americaconferences.com | glaucoma@conferencesamerica.org

<https://glaucoma.opthalmologyconferences.com>

18th International Conference on

GLAUCOMA AND RETINAL DISEASES

September 24-25, 2018 | Dallas, USA

18th INTERNATIONAL CONFERENCE ON

Glaucoma and Retinal Diseases

September 24-25, 2018 Dallas, Texas, USA

Program at a Glance

Day 1

Reception		08.00-09.00
Time	General Sessions	
09.00-09.15	Inaugural Address	
09.15-10:00	Keynote/Plenary Talk 1	
10.00-10:45	Keynote/Plenary Talk 2	
Panel Discussions/Group Photo 10:45-10:50		
Coffee/Tea Break 10.50-11.10 (Networking)		
11.10-12.10	Session on: Retinal detachment	
12.10-13.10	Session on: Glaucoma and its Causes	
Lunch Break 13.10 -13.40		
13.40-14.40	Session on: Ophthalmology	
14.40-15.40	Session on: Retina and Retinal Diseases	
15.40-16.10	Session on: Retina Disorders during Glaucoma	
Coffee/Tea Break 16.10-16.25 (Networking)		
16.25-18.00	Workshop	

Morning Sessions

Evening Sessions

Day 1

Day 2

Time	Sessions
09.00-10.00	Session on: Dry eye, Cataract, Corneal Transplant,
10.00-10.40	Session on: Conjunctiva, Retinoblastoma
Coffee/Tea Break 10.40-10.55 (Networking)	
10.55-11.45	Session on: Glaucoma Drugs Research
11:45-12:35	Session on: Advanced Glaucoma Therapeutics and Diagnosis
Lunch Break 12.35-13.25	
13.25-14.25	Session on: Medical Therapy of Glaucoma
14.25-15.25	Session on: Acute Glaucoma and Chronic Glaucoma
Coffee/Tea Break 15:25-15:45 (Networking)	
15.45-16.30	Session on: Congenital and Trauma Related Glaucoma
16.30-17.30	Session on: Glaucoma Pathophysiology and Prognosis
Poster Sessions	
Young Resercher Forum	

Morning Sessions

Evening Sessions

Day 2

Awards and Closing Ceremony

For more Details PS: <https://glaucoma.ophtalmologyconferences.com>

Email: glaucoma@americaconferences.com Tel: 702 508 5200

For More Details, Visit : <https://glaucoma.ophtalmologyconferences.com>

Tourist Destinations in Dallas, USA



AT&T Stadium



Big Bend National Park



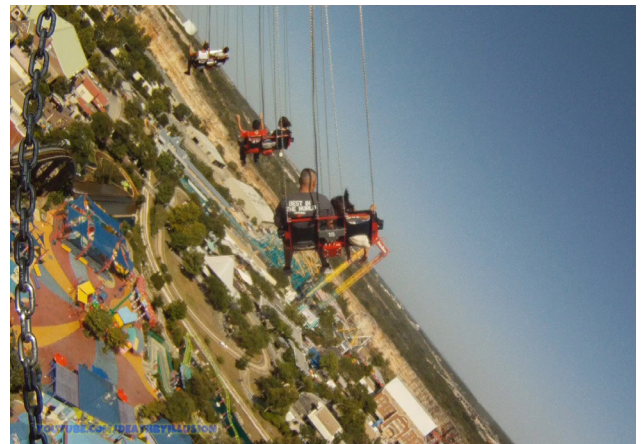
Houston Museum of Natural Science



Houston Zoo



Reunion Tower



Six Flags Fiesta Texas

Major Scientific Sessions

- Retinal detachment
- Glaucoma and its Causes
- Retina Disorders during Glaucoma
- Refractive Errors and Disorders
- Retina and Retinal Diseases
- Ophthalmology
- Medical Therapy of Glaucoma
- Laser and Surgical Therapy of Glaucoma
- Dry eye
- Retina and Retinal Disorders
- Cataract
- Conjunctiva
- Colour and Night blindness
- Diabetic Retinopathy
- Lazy Eye and Pediatric Glaucoma
- Glaucoma Screening and Intraocular Pressure
- Glaucoma Diabetes and Diamox Glaucoma
- Glaucoma Drugs Research
- Retinoblastoma
- Corneal Transplant
- Advanced Glaucoma Therapeutics and Diagnosis
- Glaucoma Epidemiology and Malignant
- Glaucoma Hereditary and Medicine
- Glaucoma Pathophysiology and Prognosis
- Stem Cell Therapy Replacement for Retinal Ganglion Cells
- Novel therapeutics ways for treating Glaucoma
- Acupuncture for Glaucoma
- Acute Glaucoma and Chronic Glaucoma
- Congenital and Trauma Related Glaucoma
- Other Related to Glaucoma and Retinal

Best Poster Award



- You will be given about 5-7 minutes to present your poster including questions and answers. Judges may pose questions during the evaluation of the poster
- Judges will even evaluate the student's enthusiasm towards their study, interest and knowledge in the area of their research
- The winners will be announced at the closing ceremony of the conference. The decision of the winner will be withdrawn if the winner/winners is/are not present at the time of announcement
- Apart from the judging time you may also be present at the poster to share your research with interested delegates



Young Researchers Forum

- Present your research through oral presentations
- Learn about career development and the latest research tools and technologies in your field
- This forum will give pertinent and timely information to those who conduct research and those who use and benefit from research
- Develop a foundation for collaboration among young researchers
- The forum will provide an opportunity for collegial interaction with other young investigators and established senior investigators across the globe
- Interact and share ideas with both peers and mentors

General Queries

glaucoma@americaconferences.com

Conference Venue

Dallas, USA

Contact us

UK: Conference Series LLC Ltd

Glaucoma and Retinal Diseases 2018

Email: glaucoma@americaconferences.com | glaucoma@conferencesamerica.org



Conference Venue

Dallas, Texas, USA

Dallas is a city within the U.S. country of Texas. It is the maximum populous town inside the Dallas–fortress worth metropolis, that is the fourth most populous metropolitan place in the USA. The city's population ranks ninth in the U.S. and 0.33 in Texas after Houston and San Antonio. The metropolis's prominence arose from its historical importance as a center for the oil and cotton industries, and its role alongside several railroad traces. The majority of the town is in Dallas County, of which it's far the county seat; however, sections of the town are placed in Collin, Dent-on, Kaufman, and Rockwall counties. In keeping with the 2010 U.S Census, the town had a populace of one, 197,816. The USA Census Bureau's estimate for the town's populace expanded to at least one, 317,929 as of July 1, 2016.

The metropolis is the largest monetary center of the 12-county Dallas–fort really worth metropolis metropolitan region (commonly referred to as DFW), which had a population of 7,246,231 as of July 1, 2016, representing growth in extra of 807,000 human beings since the 2010 census, the second largest populace boom inside the U.S. after Houston. Positioned in North Texas, Dallas is the main middle of the most important metropolitan location inside the South and the largest inland metropolitan region in the America that lacks any navigable hyperlink to the ocean.